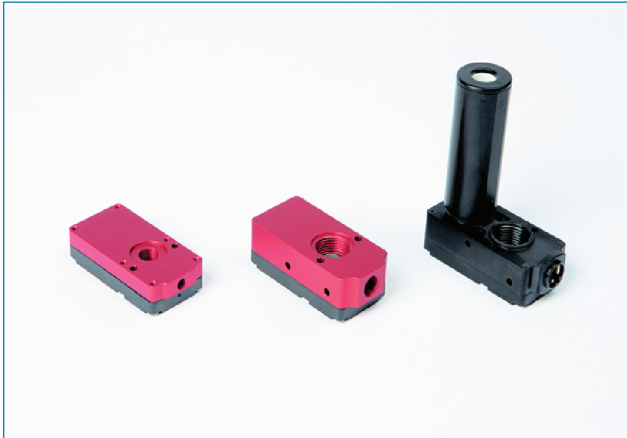


VACUUM PUMP VSM/VSX



공급 압력 / Feed pressure : 0.4 ~ 0.6 MPa
 에어 소모량 / Air consumption : 15 ~ 144 Nℓ/m
 최대 진공 / Max vacuum : - 85 ~ - 92 kPa
 소음도 / Noise level : 50 ~ 65 dBA
 재질 / Material : PPS, AL
 사용온도 / Working temperature : - 20 ~ 80℃
 중량 / Weight : 43 ~ 68g

Order no.

VS ① - ② - ③ - ④

① 모델 / MODEL

M01	X01
M02	X02
M04	X04
M06	X06

② 유형 / TYPE

	에어공급포트	진공포트	배기포트
A :	M5	PF 1/8"	소음기 내장형 / Internal silencer
B :	PF 1/8"	PF 3/8"	소음기 내장형 / Internal silencer
C :	PF 1/8"	PF 3/8"	소음기 외장형 / External silencer

유의사항 / Remark
 VSM / VSX 01 - A, B, C VSM / VSX 04 - B, C
 VSM / VSX 02 - A, B, C VSM / VSX 06 - B, C

③ 씰링 / SEALING

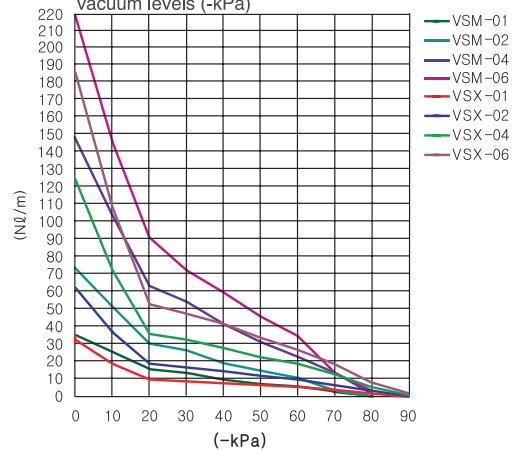
N	: NBR(표준 씰 / Standard seal)
V	: VITON
E	: EPDM
NR	: NON RETURN VALVE & NBR SEAL
NV	: NON RETURN VALVE & VITON SEAL
NE	: NON RETURN VALVE & EPDM SEAL

④ 진공스위치 / VACUUM SWITCH

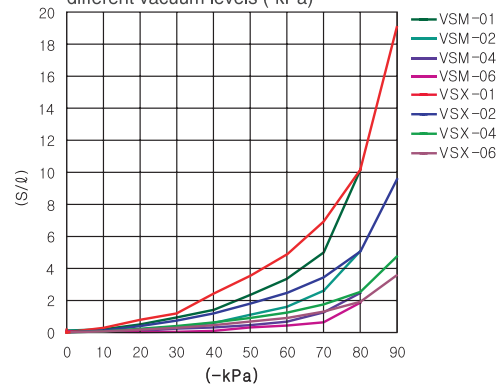
X	: 없음 (NONE)
MS	: 기계식 진공스위치 부착 / Mechanical Vacuum Switch Attachment

* 진공액세서리 필터 (특별주문)
 VACUUM ACCESSORIES FILTER (MAKE TO ORDER)
 - BVF38LF
 - BVF38LFA

각 진공도에 따른 흡입유량
 Vacuum flow (Nℓ/min) at different vacuum levels (-kPa)



각 진공도까지 도달시간
 Evacuation (s/ℓ) to reach different vacuum levels (-kPa)



※품질 향상을 위해 예고없이 사양이 변경될 수 있음.
 Specifications subject to change without notice.

DESIGN DATA

펌프의 특징 / Pump Characteristics

MODEL	최대 진공 Max.Vacuum -kPa(-mmHg)	최대 진공 유량 Max.Vacuum flow(Nℓ/min)	에어 소모량 Air consumption (Nℓ/min)	소음도 noise level (dBA)	중량 weight(g)	최소 호스 내경 \varnothing (2m 이내) Min hose inner \varnothing (within 2m)		
						공급 air supply	진공 vacuum	배기 exhaust
VSM 01	-85 (-637.5)	37	15 ~ 25	50 ~ 55	43	>4	>10	>12
VSM 02		74	30 ~ 42	55 ~ 60	43	>4	>10	>12
VSM 04		149	60 ~ 84	60 ~ 65	53	>6	>12	>15
VSM 06		220	90 ~ 126	60 ~ 65	68	>6	>12	>15
VSX 01	-92 (-690)	32	21 ~ 24	50 ~ 55	43	>4	>10	>12
VSX 02		62	43 ~ 48	55 ~ 60	43	>4	>10	>12
VSX 04		124	86 ~ 96	60 ~ 65	53	>6	>12	>15
VSX 06		185	129 ~ 144	60 ~ 67	68	>6	>12	>15

진공흡입유량 (Nℓ/min) / Induce air in liters per minute (Nℓ/min)

MODEL	-mmHg -kPa	0 (-mmHg)	75	150	225	300	375	450	525	600	675
	0 (-kPa)	10	20	30	40	50	60	70	80	90	
VSM 01	37	26	16	14	10	8	6	2.4	0.66		
VSM 02	74	52	31	28	20	16	12	4.8	1.32		
VSM 04	149	105	64	56	42	32	24	10.5	2.7		
VSM 06	220	147	92	73	60	47	37	16	4.1		
VSX 01	32	18	9	8	7	6	5	3	1.2	0.45	
VSX 02	62	36	18	16	14	11	9	6	2.4	0.9	
VSX 04	124	72	35	32	27	22	18	12	4.8	1.8	
VSX 06	185	108	52	47	41	33	26	18	7.2	2.7	

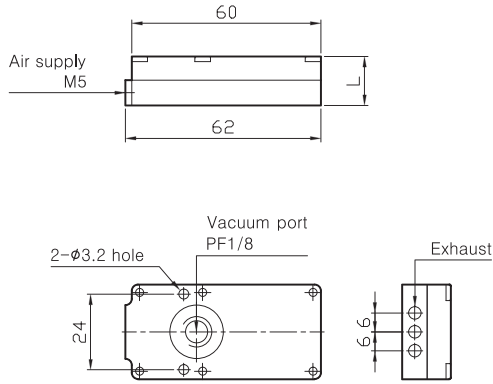
진공도달시간 (sec/ℓ) / Time in seconds to evacuate to vacuum level (sec / ℓ)

MODEL	-mmHg -kPa	75 (-mmHg)	150	225	300	375	450	525	600	675
	10 (-kPa)	20	30	40	50	60	70	80	90	
VSM 01	0.218	0.556	1	1.576	2.56	3.44	5.27	10.22		
VSM 02	0.109	0.278	0.5	0.788	1.178	1.72	2.635	5.158		
VSM 04	0.054	0.139	0.25	0.394	0.589	0.86	1.317	2.579		
VSM 06	0.041	0.010	0.019	0.295	0.441	0.647	0.898	1.935		
VSX 01	0.258	0.796	1.156	2.4	3.56	4.91	6.896	10.16	19.19	
VSX 02	0.129	0.398	0.758	1.2	1.78	2.455	3.445	5.08	9.594	
VSX 04	0.064	0.199	0.379	0.6	0.89	1.227	1.722	2.54	4.797	
VSX 06	0.048	0.149	0.284	0.44	0.673	0.917	1.287	1.906	3.595	

*품질 향상을 위해 예고없이 사양이 변경될 수 있음.
Specifications subject to change without notice.

DIMENSION

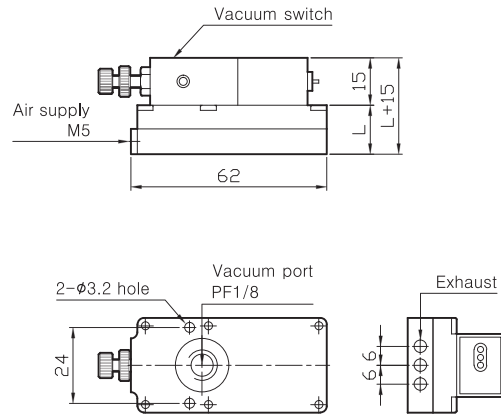
VSM/VSX 'A' type (Slencer built in)



(mm)

MODEL	L
(VSM / VSX) 01-A	15.5
(VSM / VSX) 02-A	15.5

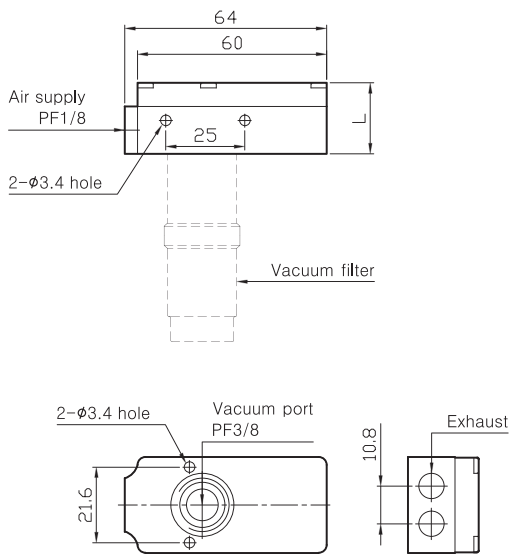
VSM/VSX 'A' type (with switch)



(mm)

MODEL	L
(VSM / VSX) 01-A-(N)-MS	15.5
(VSM / VSX) 02-A-(N)-MS	15.5

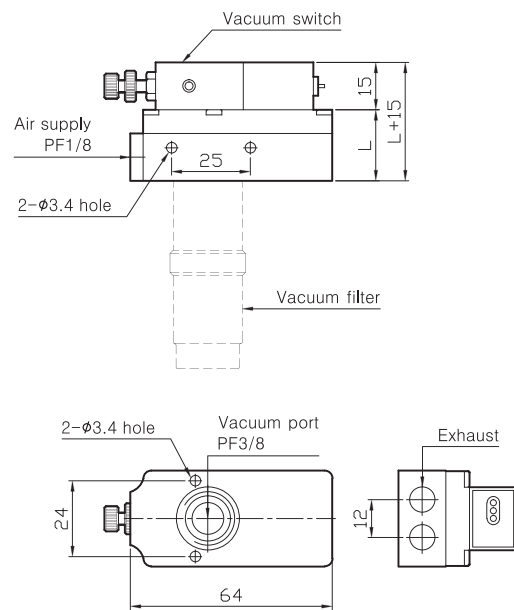
VSM/VSX 'B' type (Slencer built in)



(mm)

MODEL	L
(VSM / VSX) 01-B	22.5
(VSM / VSX) 02-B	22.5
(VSM / VSX) 04-B	30
(VSM / VSX) 06-B	37.5

VSM/VSX 'B' type (with switch)



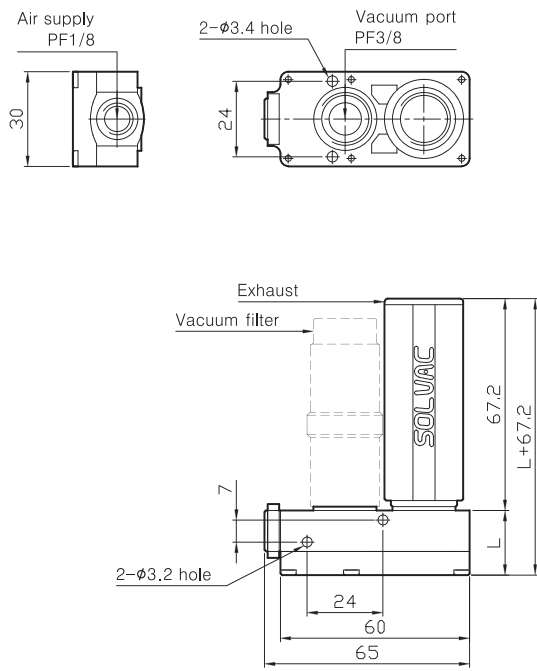
(mm)

MODEL	L
(VSM / VSX) 01-B-(N)-MS	22.5
(VSM / VSX) 02-B-(N)-MS	22.5
(VSM / VSX) 04-B-(N)-MS	30
(VSM / VSX) 06-B-(N)-MS	37.5

※품질 향상을 위해 예고없이 사양이 변경될 수 있음.
Specifications subject to change without notice.

DIMENSION

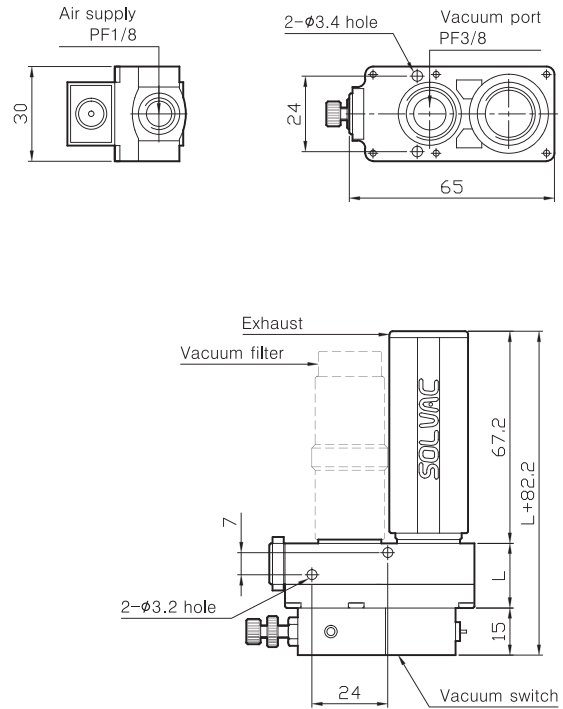
VSM/VSX 'C' type (with silencer)



(mm)

MODEL	L
(VSM / VSX) 01-C	20.5
(VSM / VSX) 02-C	20.5
(VSM / VSX) 04-C	28
(VSM / VSX) 06-C	35.5

VSM/VSX 'C' type (with switch)



(mm)

MODEL	L
(VSM / VSX) 01-(N)-C-MS	20.5
(VSM / VSX) 02-(N)-C-MS	20.5
(VSM / VSX) 04-(N)-C-MS	28
(VSM / VSX) 06-(N)-C-MS	35.5

※품질 향상을 위해 예고없이 사양이 변경될 수 있음.
Specifications subject to change without notice.